



KERIKERI CRUISING CLUB

RS FEVA NORTHLAND CHAMPIONSHIPS & Open Skiff Regatta

December 14th & 15th 2019

The organizing authority is the Kerikeri Cruising Club

SAILING INSTRUCTIONS

NB: The notation '[DP]' in a rule in the Sailing Instructions means that the penalty for a breach of that rule may, at the discretion of the protest committee, be less than disqualification.

1 RULES

- 1.1 The regatta will be governed by the rules as defined in *The Racing Rules of Sailing*.
- 1.2 The Yachting New Zealand Safety Regulations Part 1 shall apply
- 1.3 Appendix T, *Arbitration*, will apply.
- 1.4 Racing rule 44.1 will be changed so that the two turns penalty is replaced by the one turn penalty.

2 NOTICES TO COMPETITORS

Notices to competitors will be posted on the official notice board located next to the containers adjacent to the rigging area.



3 CHANGES TO SAILING INSTRUCTIONS

Any change to the sailing instructions will be posted before 0900 on the day it will take effect, except that any change to the schedule of races will be posted by 2000 on the day before it will take effect.

4 SIGNALS MADE ASHORE

- 4.1 Signals made ashore will be displayed from a flag pole at the top of the launch ramp.
- 4.2 When flag AP is displayed ashore, '1 minute' is replaced with 'not less than 30 minutes' in the race signal AP.

5 SCHEDULE OF RACES

5.1 Schedule of Racing:

Fleet/Class	Number of races per day	Time of first warning signal on Saturday 14 th December 2019	Time of first warning signal on Sunday 15 th December 2019
RS Feva	Up to 4	11:00	11:00
Open Skiff Gold/Silver	Up to 4	11:03	11:03

- 5.2 On Sunday 15th December no warning signals will be made after 15:30
- 5.3 To alert boats that a race or sequence of races will begin soon, the orange starting line flag will be displayed with one sound at least three minutes before a warning signal is made.
- 5.4 A briefing will be held at 10:00hrs on both race days at the containers adjacent to the Rigging Area.

6 RACING AREAS

The Race Area will be on the water as per Attachment (1).

7 THE COURSES

- 7.1 The diagrams in Attachment (2) show the courses, the order in which marks are to be passed, and the side on which each mark is to be left.
- 7.2 The course to be sailed each day will be explained at the daily briefing
- 7.3 The Start/Finish line is to be treated as an obstruction and only crossed when a competitor is starting or finishing a race



8 MARKS

- 8.1 The marks to be used will be identified at the briefing.
- 8.2 A race committee vessel signaling a change of a leg of the course is a mark as provided in SI 10.2.

9 STARTS

- 9.1 Races will be started by using RRS 26 with the warning signal Three (3) minutes before the starting signal.

<i>Minutes before starting signal</i>	<i>Visual Signal</i>	<i>Sound Signal</i>	<i>Means</i>
3	Class Flag	One	Warning Signal
2	Preparatory flag	One	Preparatory signal
1	Preparatory flag removed	One long	One minute
0	Class Flag removed	One	Starting signal

- 9.2 The starting line will be between a staff displaying an orange flag on the Signal Boat at the starboard end and the course side of the port-end starting mark.
- 9.3 Boats whose warning signal has not been made shall avoid the starting area during the starting sequence for other races. [DP]

10 CHANGE OF THE NEXT LEG OF THE COURSE

- 10.1 To change the next leg of the course, the race committee will move the original mark (or the finishing line) to a new position.
- 10.2 Except at a gate, boats shall pass between the race committee vessel signaling the change of the next leg and the nearby mark, leaving the mark to port and the race committee vessel to starboard. This changes RRS 28.

11 THE FINISH

- 11.1 The finishing line will be between a staff displaying a blue flag on the signal Boat and the windward edge of the finish mark.

12 PENALTY SYSTEMS

- 12.1 RRS 44.1, is changed so that the Two-Turns Penalty is replaced by the One-Turn Penalty.



13 TIME LIMITS AND TARGET TIMES

13.1 Time limits and target times are as follows

<i>CLASS</i>	<i>TARGET TIME</i>	<i>FINISH WINDOW</i>	<i>TIME LIMIT</i>
All Classes	35 Mins	15 mins	60 Mins

13.2 Boats failing to finish within the Finish Window after the first boat sails the course and finishes will be awarded their placing at the last mark rounded.

14 PROTESTS AND REQUESTS FOR REDRESS

14.1 Immediately after finishing a boat intending to protest shall, inform the race committee at the finishing line of her intention to protest and the identity of the boat(s) protested against. The protesting boat must receive an acknowledgement from the race committee. This changes RRS 61.

14.2 It is the KCC intention to have all sailors compete fairly and consider the alternative penalty before finishing to ensure a finishing place.

14.3 Arbitration will be available for any incident that is not resolved on the water with the alternative penalty.

15 SCORING

15.1 The Low Point scoring system of Appendix A will apply.

15.2 One race is required to be completed to constitute a series.

15.3 When fewer than 5 races have been completed, a boat's series score will be the total of her race scores.

15.4 When 5-8 races have been completed, a boat's series score will be the total of her race scores excluding her worse score.

16 SAFETY REGULATIONS

16.1 No boat will leave the shore prior to the raising of the D flag (and warning signal)

16.2 Boats not leaving the shore for a scheduled race shall promptly notify the race office.



- 16.3** Check –out and check –in ashore:
- a) Competitors shall individually check out before racing by personally signing the sailing register [DP]
 - b) Competitors shall individually check-in immediately on returning to shore after racing, by personally signing the sailing register [DP]
- 16.4** A boat retiring from racing shall notify the Race Committee before leaving the racing area, or if that is not possible, shall notify the Race Office as soon as possible after returning ashore. [DP]

17 SUPPORT BOATS

- 17.1** Except when requested to participate in rescue operations, coaches, and other support persons shall stay outside areas where boats are racing and are restricted to a 5-knot speed limit when in the proximity of other boats, [DP]
- 17.2** Coaching is permitted for the sailors in the Open Skiff Silver Fleet only.
- 17.3** Attention is drawn the relevant local council bylaws regarding wearing of lifejackets and other restrictions.
- 17.4** When flag V (with a long sound signal) is displayed on a committee boat all support boats are requested to remain afloat and assist all sailors.

18 PRIZES

At the conclusion of the RS FEVA NORTHLAND CHAMPIONSHIPS & Open Skiff Regatta medals will be awarded as follows:

RS Feva:

Youth (age <18): 1st, 2nd and 3rd

Ladies (age <18): 1st

Mixed (age <18): 1st

Junior (age <13): 1st

Open (age >18): 1st

First Feva Regatta (age <18): 1st

Open Skiff

Gold Fleet: 1st, 2nd and 3rd

Silver Fleet: 1st, 2nd and 3rd

19 INSURANCE

Refer to NOR 14

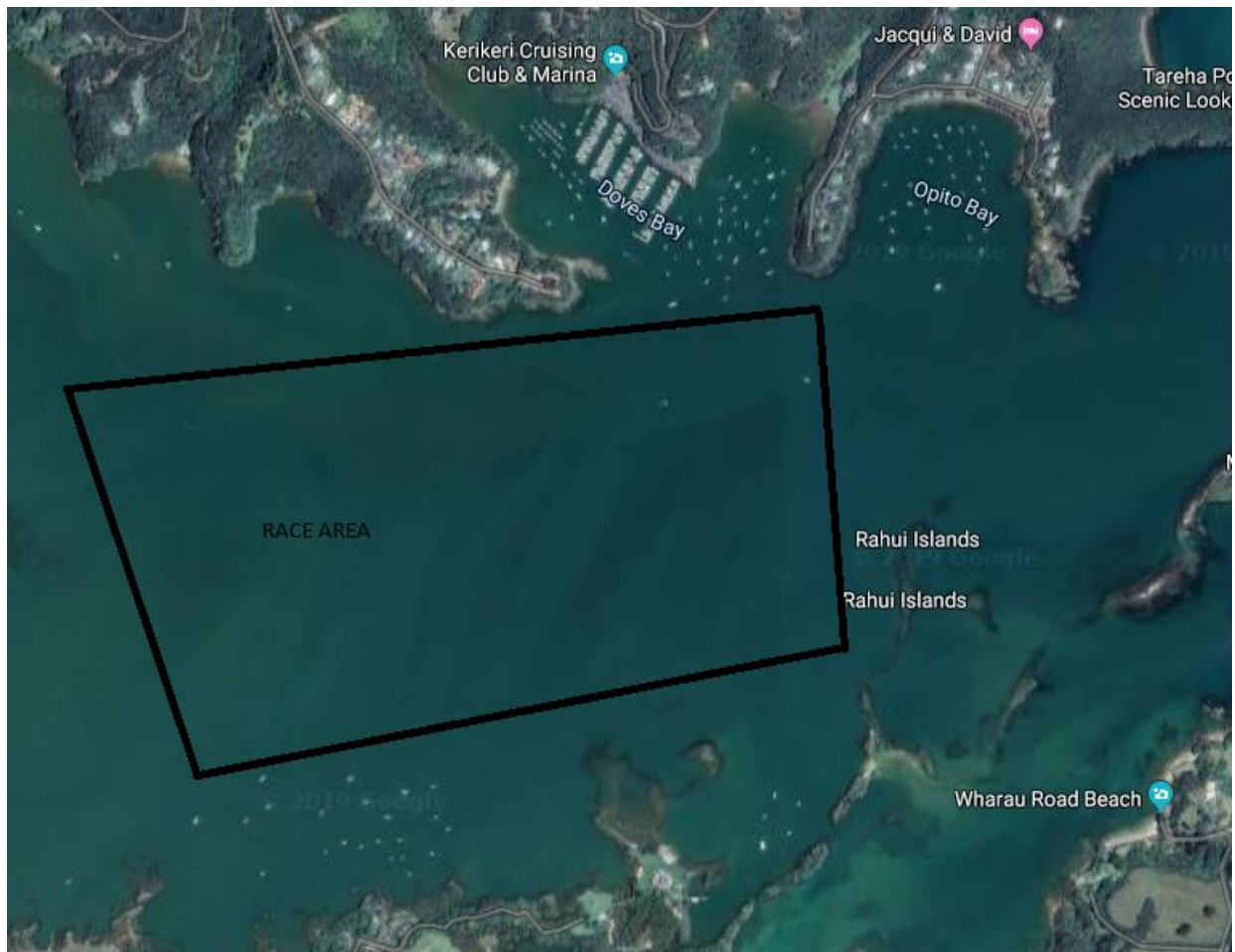


20 DISCLAIMER OF LIABILITY

Competitors participate in the regatta entirely at their own risk. See RRS 4, Decision to Race. The organizing authority will not accept any liability for material damage or personal injury or death sustained in conjunction with or prior to, during, or after the regatta.

Attachment 1

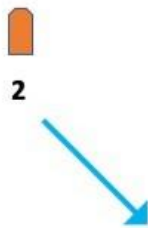
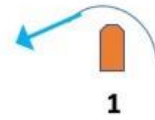
Race Area



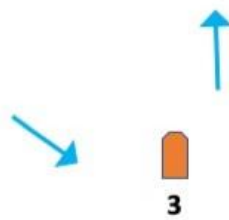
Attachment 2

Course

Triangle



Course: Start - 1 - 2 - 3 - 1 - 3 - Finish



W L (M)



Course 1 Start – 1 – 2S/2P – Finish

Course 1A Start – 1A – 2S/2P – Finish

Course 2 Start – 1 – 2S/2P – 1 – 2S/2P – Finish

Course 2A Start – 1A – 2S/2P – 1A – 2S/2P – Finish

